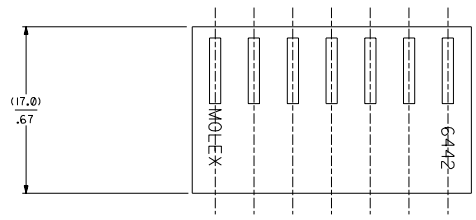


SECTION "C-C"



NO. OF CKT'S.	DIM. A	DIM. B
1	-----	(4.78+.18)
2	(3.96+.13)	.188+.007
	.156+.005	.344+.007
3	(7.92+.13)	(8.74+.18)
	.312+.005	.500+.007
4	(11.89+.13)	(12.70+.18)
	.468+.005	.656+.007
5	(15.85+.13)	(16.66+.18)
	.624+.005	.812+.007
6	(19.81+.13)	(20.62+.18)
	.780+.005	.968+.007
7	(23.77+.13)	(24.59+.18)
	.936+.005	1.124+.007
8	(27.74+.25)	(28.55+.18)
	1.092+.010	1.280+.012
9	(31.70+.25)	(32.51+.30)
	1.248+.010	1.436+.012
10	(35.66+.25)	(36.47+.30)
	1.404+.010	1.592+.012
11	(39.62+.25)	(40.44+.30)
	1.560+.010	1.748+.012
12	(43.59+.25)	(44.40+.30)
	1.716+.010	1.904+.012
13	(47.55+.30)	(48.36+.30)
	1.872+.012	2.060+.014
14	(51.51+.36)	(52.32+.36)
	2.028+.014	2.216+.016
15	(55.47+.36)	(56.29+.41)
	2.184+.014	2.372+.016
16	(59.44+.36)	(60.25+.41)
	2.340+.014	2.528+.016
17	(63.40+.36)	(64.21+.41)
	2.496+.014	2.684+.016
18	(67.36+.36)	(68.17+.41)
	2.652+.014	2.840+.016
19	(71.32+.36)	(72.14+.41)
	2.808+.014	2.996+.016
20	(75.29+.46)	(76.10+.41)
	2.964+.018	3.152+.020
21	(79.25+.46)	(80.06+.51)
	3.120+.018	3.308+.020
22	(83.21+.46)	(84.02+.51)
	3.276+.018	3.464+.020
23	(87.17+.46)	(87.99+.51)
	3.432+.018	3.620+.020
24	(91.14+.46)	(91.95+.51)
	3.588+.018	3.776+.020

- NOTES :
- HOUSING SHOWN ABOVE IS STANDARD HOUSING WITH NO OPTIONS.
 - THIS HOUSING FOR USE WITH TERMINAL NO. 6438-*, (18-22 GA.) WITH (2.79/.110) MAX. INSULATION DIA. 6838-*, (18-24 GA.) WITH (2.79/.110) MAX. INSULATION DIA. 7258-*, (22-26 GA.) WITH (1.65/.065) MAX. INSULATION DIA.
 - CIRCUIT SIZE MOLDED ON 4 THRU 24 CIRCUIT HOUSINGS ONLY.
 - SEE SHEET 2 FOR OPTIONS.
 - THIS PART COMPLIES WITH PROD. SPEC. 40-02.
 - MATERIAL: SEE LEGEND FOR MATERIAL CODE.

6442- * N - * - * - *

HOUSING OPTIONS

CODE	HOOKS	SIDE HOOKS	RAMP
BLANK	NONE	NONE	NONE
A	NONE	YES	NONE
R	NONE	NONE	FRICTION
B	NONE	NONE	TYPE B
C	NONE	NONE	TYPE C
D	NONE	NONE	TYPE D

VOLTAGE RATING OPTION
BLANK=NONE
V= *250 VAC* ON HOUSING

MAT'L. OPTION
BLANK=NYLON 6/6, 94V-2.

MOLDED VOID CODE
Z=NO VOIDS
A=CKT. 1 VOID,
B=CKT. 2 VOID, ETC.
5=1ST MULTIPLE VOID,
52=2ND MULTIPLE VOID, ETC.

NO. OF CKT'S. _____

4	G4	DELETE DYED PARTS
3	H	UCP2003-5590
2	F	BY 67-031 SCHAFER
1	H	G4 DEL UNTOOLED
		UCP2003-0794
		11/12/2006 SAMIEC

MFG. SH. REV. LTR. REVISIONS

DIMENSIONS SHOWN METRIC INCH

SCALE: 1" = 100.0000

DATE: 12/3/86

FILE NO. 6442

SCALE: --1--

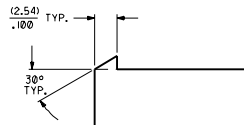
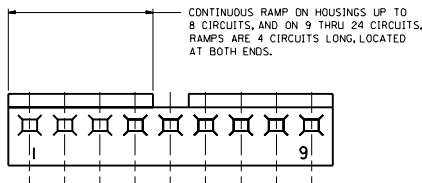
HOUSING, FOR TRIFURCON TERM., (3.96)/.156

6442 SERIES DWG.

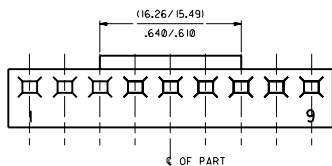
MOLEX INCORPORATED

SEE CHART

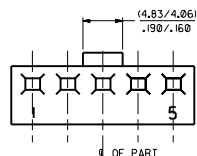
SD-6442



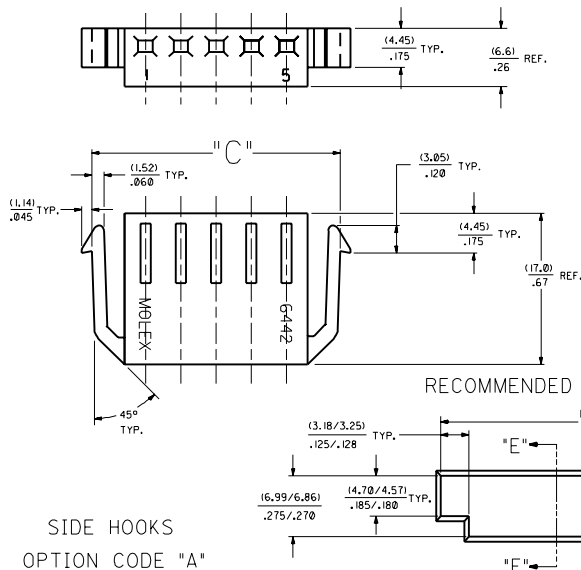
STD. RAMP OPTION CODE "R"



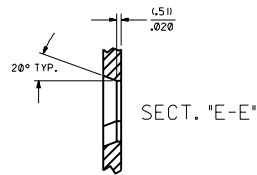
SELECTIVE RAMP OPTION CODE "C"



SELECTIVE RAMP OPTION CODE "B"

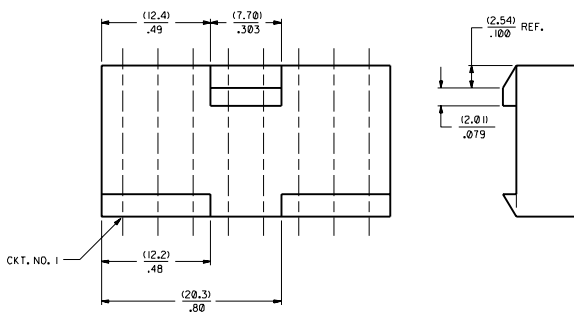


SIDE HOOKS OPTION CODE "A"

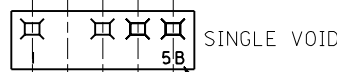


SECT. "E-E"

RECOMMENDED (2.03)/.080 THICK PANEL OPENING.



SELECTIVE RAMP OPTION CODE "D"
INTERNATIONAL PART ONLY
(8 CKT. PART ONLY)

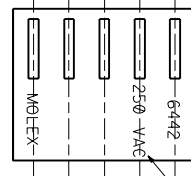


SINGLE CKT. VOID CODE



MULTIPLE CKT. VOID CODE

MOLDED VOIDS
SEE LEGEND ON SHT. I
SEE CHART FOR VOID CKT. LOCATIONS



SEE LEGEND ON SHT. I

OPT. VOLTAGE RATING

NO. OF CKT S.	DIM. "C"	DIM. "D"
2	(16.48/15.60)	(15.47/15.34)
3	(16.49/15.61)	(15.48/15.35)
4	(16.50/15.62)	(15.49/15.36)
5	(16.51/15.63)	(15.50/15.37)

SEE SHEET I		SEE SHEET I		DIMENSIONS SHOWN IN METRIC UNITS		REVISE ONLY ON CAD SYSTEM	
SEE SHEET I	SEE SHEET I	SEE SHEET I	SEE SHEET I	UNITS	IN	MM	FILE
SEE SHEET I	SEE SHEET I	SEE SHEET I	SEE SHEET I	TYPICAL	0.015	0.38	HOUSING, FOR TRIFURCON TERM.,
SEE SHEET I	SEE SHEET I	SEE SHEET I	SEE SHEET I	MINIMUM	0.014	0.35	(3.96)/.156 &
SEE SHEET I	SEE SHEET I	SEE SHEET I	SEE SHEET I	MAXIMUM	0.015	0.38	6442 SERIES DWG.
SEE SHEET I	SEE SHEET I	SEE SHEET I	SEE SHEET I	MOLDED PARTS ARE UNLESS OTHERWISE SPECIFIED			
SEE SHEET I	SEE SHEET I	SEE SHEET I	SEE SHEET I	SEE CHART FOR VOID CKT. LOCATIONS			
SEE SHEET I	SEE SHEET I	SEE SHEET I	SEE SHEET I	MATERIAL: POLYCARBONATE			
SEE SHEET I	SEE SHEET I	SEE SHEET I	SEE SHEET I	FINISH: UNPOLISHED			
SEE SHEET I	SEE SHEET I	SEE SHEET I	SEE SHEET I	PART NO. SD-6442			
SEE SHEET I	SEE SHEET I	SEE SHEET I	SEE SHEET I	DATE: 12/5/86			
SEE SHEET I	SEE SHEET I	SEE SHEET I	SEE SHEET I	DRAWN BY: [UNRECOGNIZED]			
SEE SHEET I	SEE SHEET I	SEE SHEET I	SEE SHEET I	CHECKED BY: [UNRECOGNIZED]			
SEE SHEET I	SEE SHEET I	SEE SHEET I	SEE SHEET I	APPROVED BY: [UNRECOGNIZED]			
SEE SHEET I	SEE SHEET I	SEE SHEET I	SEE SHEET I	MATERIAL: POLYCARBONATE			
SEE SHEET I	SEE SHEET I	SEE SHEET I	SEE SHEET I	FINISH: UNPOLISHED			
SEE SHEET I	SEE SHEET I	SEE SHEET I	SEE SHEET I	PART NO. SD-6442			
SEE SHEET I	SEE SHEET I	SEE SHEET I	SEE SHEET I	DATE: 12/5/86			
SEE SHEET I	SEE SHEET I	SEE SHEET I	SEE SHEET I	DRAWN BY: [UNRECOGNIZED]			
SEE SHEET I	SEE SHEET I	SEE SHEET I	SEE SHEET I	CHECKED BY: [UNRECOGNIZED]			
SEE SHEET I	SEE SHEET I	SEE SHEET I	SEE SHEET I	APPROVED BY: [UNRECOGNIZED]			

